

15. Life on Land

Iroha, Kana, Akari, Yuktaka, Kosuke, Yoshiki

15 LIFE
ON LAND



What is Deforestation??

A stylized illustration of a landscape. On the right side, there are three trees with thick, vertical trunks in shades of orange and brown, and large, rounded, light-orange canopies. The ground is a dark green, sloping hill that rises from the bottom left towards the right. Small, dark green tufts of grass are scattered on the hill. The background is a plain, light cream color.

We will provide you the lecture about the deforestation related to **SDGs 6**. Let's think about it deeply.

Deforestation is ...

The removal of forests by people, which has been an increasingly serious problem worldwide, contributing to timber and soil scarcity as well as to global warming.

Theilmann, J. M. (2022). Deforestation. *Salem Press Encyclopedia of Science* <https://search.ebscohost.com/login.aspx?direct=true&db=ers&AN=89474630&lang=ja&site=eds-live>.



[What is Deforestation? | Eco Facts | One Tree Planted](#)

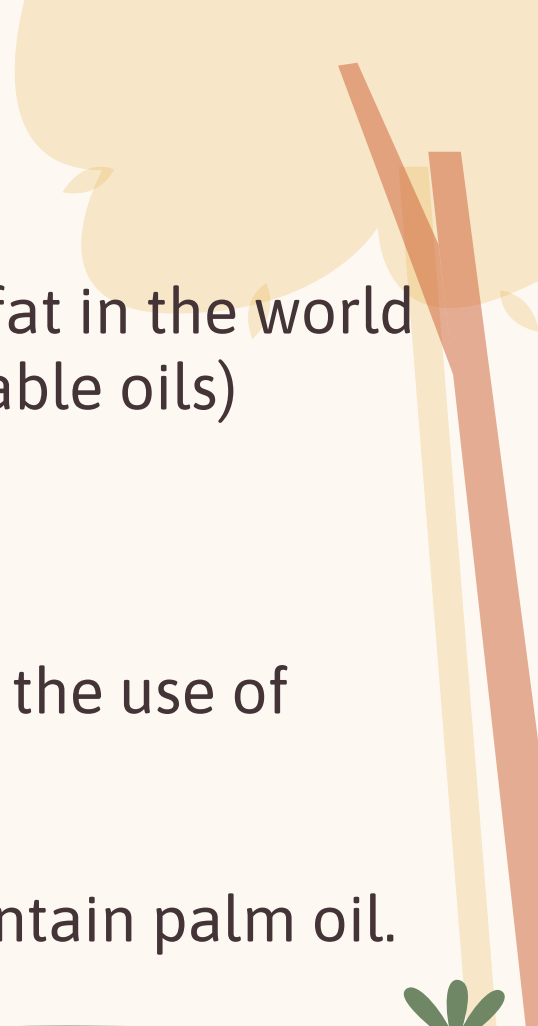
Palm oil

The most widely consumed vegetable oil and fat in the world today.(31 percent of total production of vegetable oils)

Used cosmetic product, soap, food.

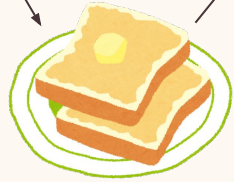
The use of food accounts for the 80 percent of the use of entire palm oil.

It is said that half of the supermarket items contain palm oil.



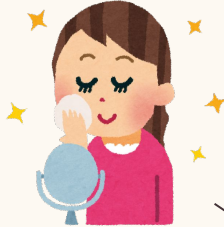
So much palm oil is being consumed in our daily lives!!!

toothpaste
facial cleaner



butter
margarin

cosmetics



cleaning
detergent

lunch



laundry
detergent

dinner



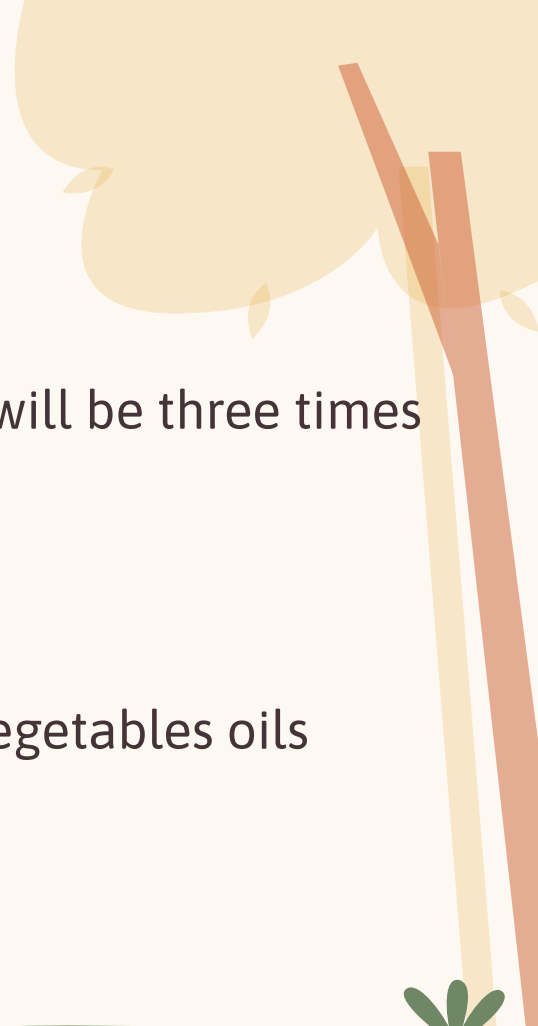
soap

moisturizer



Problems with palm oil

1. deforestation of southeast Asian rainforests
(it is proposed that the amount of palm oil production will be three times much between 2010 and 2030)
2. Terrible workforce environment
3. Some countries law do not require a breakdown of vegetables oils
4. Rob animals of food and habitat



The disadvantages of Cotton

High amounts of water is need in the cotton production (cotton 1kg = 10,000L)

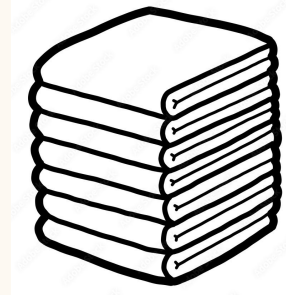
Large quantities of pesticides are used in cotton production



Problem 2: Cotton

Cotton is used in many things around us.

Ex) T-shirt, Dresses, Jeans, Towels



Cotton is an essential part of people's lives

Features and Advantages of Cotton Fabrics



High durability



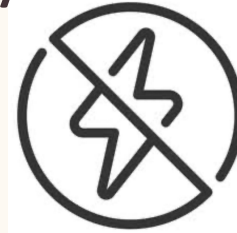
Good breathability



Soft to the touch



Easy to dye



Static electricity resistance

Activities by FSC



FSC mark

FSC(Forest Steward Council) was founded in 1994 to stop the deforestation.

It enable us to distinguish and purchase wood from properly managed forests.

FSC put FSC mark on environmentally-friendly products

⇒We can contribute to save the deforestation by choosing those products

How FSC works?



FSC manages the commercial forests in an environmentally friendly way, processes them in certified industrial institutions, and then offers them to customers with the FSC mark.



Buying these products
helps to protect
deforestation and
animals!!



A stylized illustration of a tree on the left and green bushes at the bottom. The tree has a thick, light brown trunk and a large, rounded, light orange canopy. The bushes are small, green, and have a rounded, leafy appearance. The background is a solid light beige color.

**We also have some similar
activities to protect deforestation
by other institutions!!**



Organic

certified by [certifier's ref.]

Licence no [1234]



©TextileExchange

- The left top mark is GOTS mark and the another one is OCS mark.
- Both ensure the quality of cotton products.
- However, GOTS mark also guarantee the contribution for environment
- For example, it restricts the usage of chemical substances and water



This is RSPO mark which tackles environment protection dealing with the problems of palm oil production.

It proves the companies

- **don't cut down nature forests needed to be preserved**
- **eliminate the unjustified work and secure the laborers health and security.**



Model of Supply chain	IP	SG	MB	B&C
Mark				
Description	Certificated sustainable oil	Certificated sustainable oil	Contributes to sustainable oil	Supports for sustainable oil *
Traceability	◎	○	△	×
Cost of enabled oil	¥¥¥¥	¥¥¥	¥¥	¥

*SG is almost the same as the IP, the only difference is whether the field and factory is single or plural.

There are 4 types of RSPO marks by contribution for protection of environment.

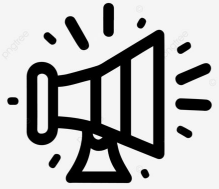
The more left marks is more effective

An illustration of a forest scene. In the foreground, a large log with a cut end showing concentric rings is supported by a dark purple wooden stand. The background features several trees with light brown trunks and large, soft, light orange canopies. The ground is a dark green field with small tufts of grass.

Reading

This is a document of some solution to protect nature from the aspect of politics and government

➤ [Click here and Read the part of “THE TARGETS”](#)



Discussion

Let's think and discuss about how **we** can protect our nature...
And write down your idea!!

